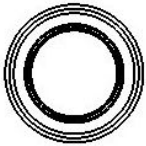
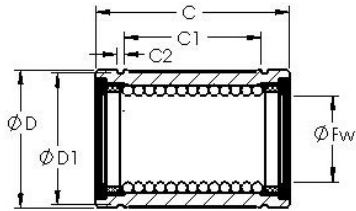




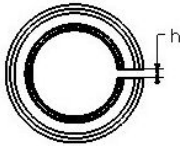
AD Bearing Machine Co., Ltd

AST LBB 20 UU AST Bearing

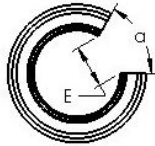
Bearing No. LBB 20 UU



STANDARD



ADJUSTABLE



OPEN

LBB 20 UU Bearing 2D drawings and 3D CAD models

Bore Diameter	31,75 mm
Bearing Type	sealed, standard type
Dynamic Load Rating (Cr)	432
Static Load Rating (Cor)	1,027
Shaft Dia. (Fw)	1.250
Outside Dia. (D)	2.000
Length (C)	2.625
Groove-to-groove length (C1)	2.005
Groove Width (C2)	0.068
Groove Dia. (D1)	1.910
Weight (g)	325.00
Material	52100 chrome steel, or equivalent