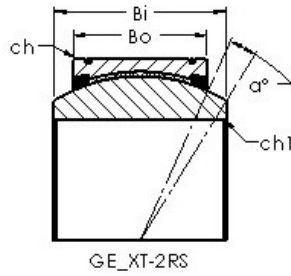
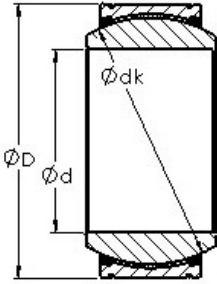




AD Bearing Machine Co., Ltd



AST GEG120XT-2RS AST Bearing

Bearing No. GEG120XT-2RS

GEG120XT-2RS Bearing 2D drawings and 3D CAD models

Bore Diameter	120 mm
Outer Diameter	210 mm
Bearing Type - double fracture - sealed, high mis-alignment	sealed, high misalignment
Bore Dia (d)	120.0000
Outer Dia (D)	210.0000
Outer Width (Bo)	70.0000
Inner Width (Bi)	115.0000
Dynamic Load Rating (Cr)	1,890,000
Static Load Rating (Cor)	4,530,000
Max. shaft corner radius, or 45 deg. chamfer (ch1)	1.000
Max. housing corner radius, or 45 deg. chamfer (ch)	1.000
Spherical Diameter (dk or Dk)	180.000
Mis-alignment Angle (a deg.)	16
Weight (g)	15,100.00
Material	Inner ring and outer ring are made from 52100 chrome steel, or equivalent