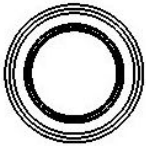
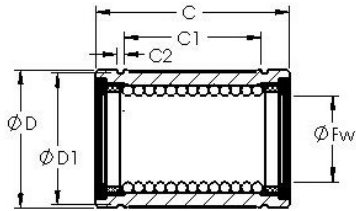




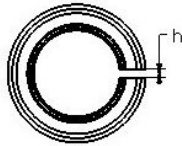
# AD Bearing Machine Co., Ltd

## AST LBE 16 UU AST Bearing

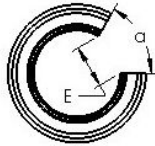
Bearing No. LBE 16 UU



STANDARD



ADJUSTABLE



OPEN

LBE 16 UU Bearing 2D drawings and 3D CAD models

Bore Diameter	16 mm
Bearing Type	sealed, standard type
Dynamic Load Rating (Cr)	311
Static Load Rating (Cor)	587
Shaft Dia. (Fw)	16.000
Outside Dia. (D)	26.000
Length ( C )	36.000
Groove-to-groove length (C1)	22.000
Groove Width (C2)	1.600
Groove Dia. (D1)	25.000
Weight (g)	47.50
Material	52100 chrome steel, or equivalent